

50TON SHOP PRESS



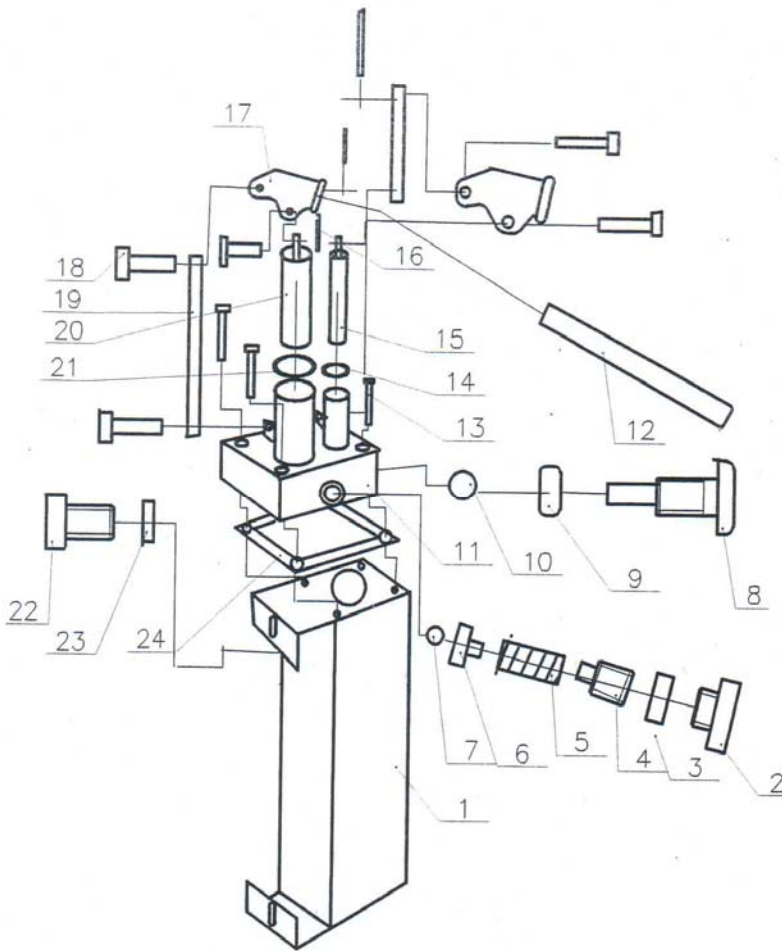
WARNING!

We've done all we can to assure this press offers the utmost in safety, but you have to do your part. No amount of warning can take the place of your good judgment, so make sure it's the first thing you bring to any job. Beyond that there are some obvious tips:

Steel and other materials can shatter, so always use protective eyewear that complies with the appropriate ANSI code.

If you detect anything that may indicate imminent structural failure, stop using the press immediately and inspect it thoroughly. Bolt the press to the floor if it is to be used on bulky or unstable items. Do not use press to compress springs or any other item that could disengage and cause a potential hazard.

PUMP ASSEMBLY



Ref #	Description	QTY
1	Oil Tank	1
2	Sealed Screw	1
3	Sealed Ring	1
4	Pressure Adjustment Screw	1
5	Pressure Adjustment Spring	1
6	Ball Valve Socket	1
7	Steel Ball	1
8	Oil Release Plug	1
9	Sealed Ring	1
10	Steel Ball	1
11	Ram	1
12	Handle Rod	1
13	Fixed Screw	4
14	Sealed Ring	1
15	Mini Pumping Core	1
16	Cotter Pin	6
17	Lifting Handle	2
18	Pin	6
19	Connecting Rod	2
20	Big Pumping Core	1
21	Sealed Ring	1
22	Oil Injection Screw	1
23	Sealed Ring	1
24	Sealed Ring	1

OPERATING INSTRUCTIONS

Fluid Level

To Raise: Open release screw by turning to left. Pump several full strokes to eliminate air. Close release screw by turning to right until tight, then continue pumping.

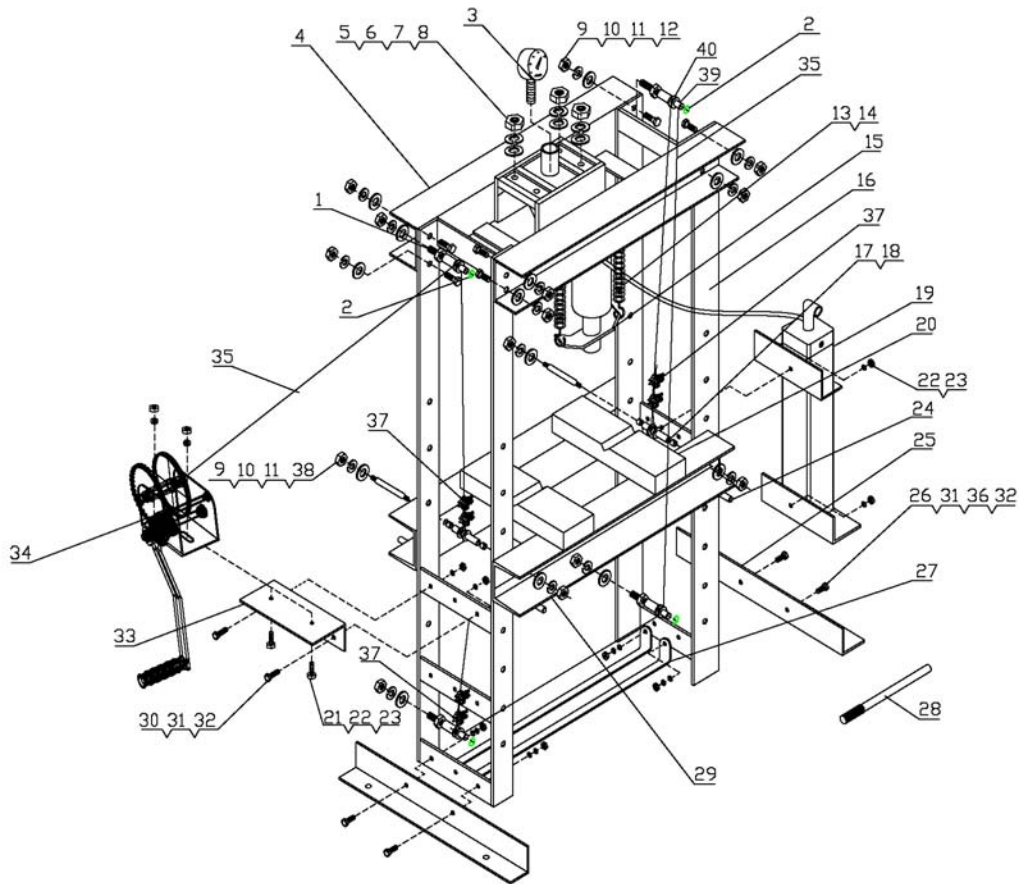
To Lower: Turn release valve screw to left slowly.

To maintain oil level-with ram in down position add hydraulic jack oil to filter screw level.

Caution-Do not use brake or shock absorber fluid, glycerine, alcohol, dirty oil.

If ram still does not operate properly loosen filler plug.

PARTS LIST



REF #	DESCRIPTION	QTY	REF #	DESCRIPTION	QTY
1	Rope Wheel Axis	4	21	Hex Bolt M10x30	4
2	Snap Ring Ø25	4	22	Flat Washer Ø10	4
3	Pressure Gauge	1	23	Hex Nut M10	4
4	Upper Crossbar	1	24	Pin	2
5	Hex Nut M20	4	25	Bottom Feet	2
6	Lock Washer Ø20	4	26	Hex Bolt M12x45	4
7	Flat Washer Ø20	4	27	Spreader	2
8	Hex Bolt M20x70	4	28	Handle	1
9	Hex Nut M20	18	29	Table Weldment	1
10	Lock Washer Ø20	14	30	Hex Bolt M12x30	2
11	Flat Washer Ø20	14	31	Flat Washer Ø12	6
12	Hex Bolt M24x55	6	32	Hex Nut M12	6
13	Spring Base	2	33	Winch Base	1
14	Spring	2	34	Winch	1
15	Hydraulic Jack Roof	1	35	Steel Wire	2
16	Uprights Weldment	2	36	Lock Washer Ø12	4
17	Nip Cover	4	37	Line Collet	6
18	Limiting Weldment	2	38	Studded	2
19	Hydraulic Jack	1	39	Composite Bearing	4
20	Table Plate	2	40	Rope Wheel	4

PRESSURE HEAD ASSEMBLY

PARTS LIST

REF #	DESCRIPTION	QTY
1	Pressure Gauge	1
2	Nylon Ring	1
3	Press Meter Connector	1
4	Extensionsprin Bolt	2
5	Cylinder Assembly	1
6	Extension Spring	2
7	Piston Seal Ring	1
8	Piston Head	1
9	Piston Rod	1
10	Guide Sleeve	1
11	Pressure Head	1
12	Spring Plate	1
13	Oil-Pipe Connector	1

